

New Generation Ultra Rapid Tissue Processor

Histra-QS

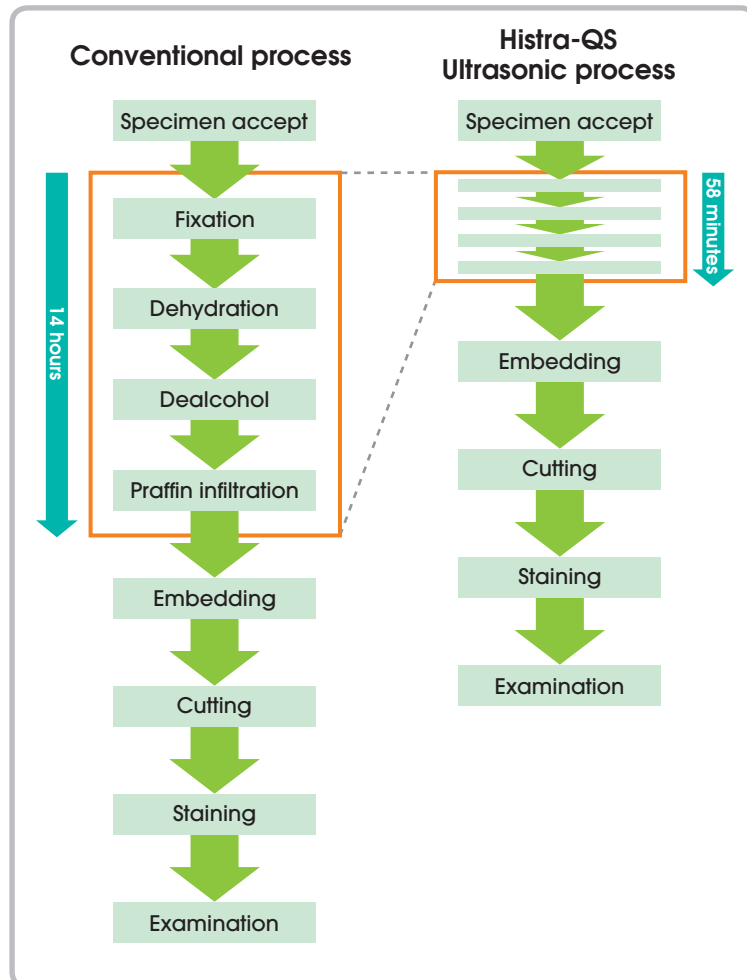


Features

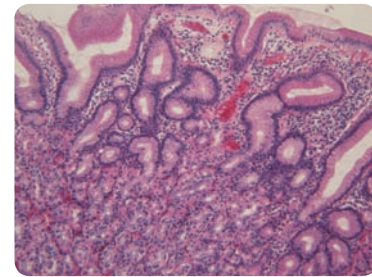
- ◆ Only 58 minutes tissue processing time is required from fixation to paraffin infiltration.
- ◆ Compact size, 56 (W) x 50 (D) x 66 (H) cm, and easy operation fits everywhere in molecular pathology laboratory bench top.

Histra-QS featured innovative ultrasonic technology and heating techniques provides ultra rapid tissue processing time of only 58 minutes.

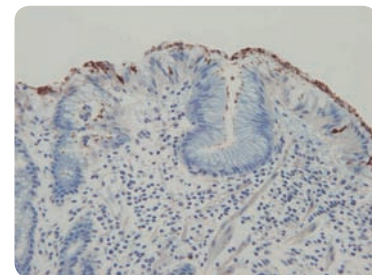
■ Ultra rapid processing time of Histra-QS enabling same-day diagnosis drastically reducing patient long stay and anxiety.



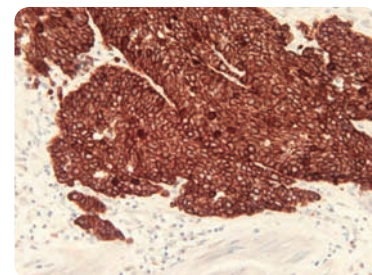
■ High resolution staining specimens.



Stomach HE x 200



Stomach Immuno-staining
H-pylori x 200



Prostatic carcinoma Immuno-staining
Keratin x 400

Specification of Histra-QS

Processing method	Ultrasonic and heating at 60°C
Processing time	58 minutes
Through put	20 specimens/every 73 minutes
Reagent station	7 reagent bottles
	3 cleaning bottles
Processing programme	6 programmes
Display	10.4-inch full color LCD display
Power	AC 110/220 V±10%, 50/60 Hz
Dimensions	560 (W) x 500 (D) x 660 (H) mm
Weight	Approx. 60 kg



JOKOH CO., LTD.

3-19-4 Hongo, Bunkyo-ku, Tokyo 113-0033, Japan

Phone: +81-3-3814-1981 Fax: +81-3-3815-1759

Email: worldwide@jokoh.com

Home page: <http://www.jokoh.com>